

SOUTH & NORTH EXPEDITION

GALAPAGOS LEGEND

South&NorthExpedition (D+A) 8 days - 7 nights

Thursday - Thursday

Experience unforgettable Galapagos adventures with our weekly departures. Our itineraries include full board, two daily guided excursions, and optional activities like snorkeling, kayaking, and dinghy rides. You can also extend your trip with diving programs and extra nights in Galapagos upon requests.



Thursday:

- am. ✈ San Cristobal Airport
- pm. Interpretation Center & Frigatebird Hill (San Cristobal Island)

Friday:

- am. Gardner Bay (Española Island)
- pm. Punta Suarez (Española Island)

Saturday:

- am. Post Office (Floreana Island)
- pm. Punta Cormoran / Devil's Crown (Floreana Island)

Sunday:

- am. Dragon Hill (Santa Cruz Island)
- pm. Punta Bowditch (Santa Cruz Island)

Monday:

- am. Highlands Tortoise Reserve & Charles Darwin Research Station (Santa Cruz Island)
- pm. Black Turtle Cove (Santa Cruz Island)

Tuesday:

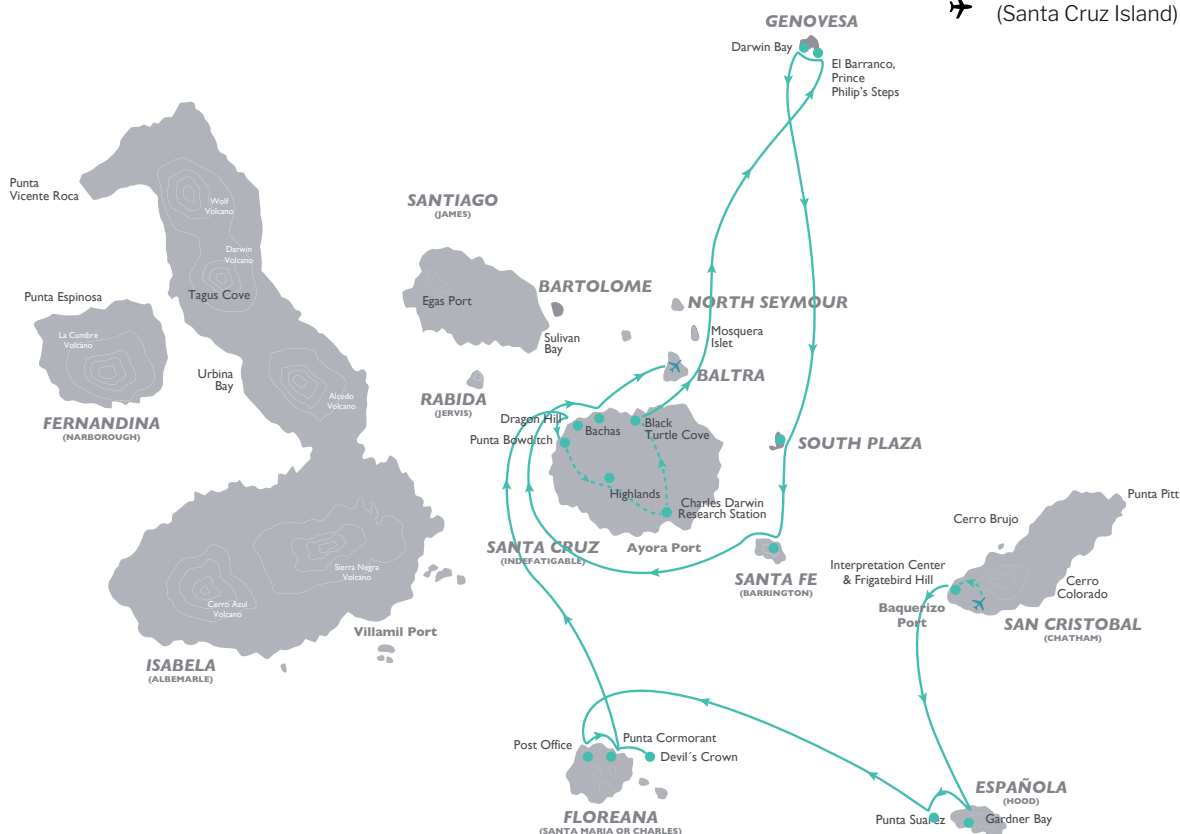
- am. El Barranco Prince Philip's Steps (Genovesa Island)
- pm. Darwin Bay (Genovesa Island)

Wednesday:

- am. South Plaza Island
- pm. Santa Fe Island

Thursday:

- am. Bachas Beach ((Santa Cruz Island)
- ✈ (Santa Cruz Island)



DAY 1

THURSDAY



 Morning

Departure from either Quito or Guayaquil to Baltra Island is a 2 ½ hour flight. Upon arrival in the Galapagos, passengers are greeted at the airport by our knowledgeable guides who will accompany them on a short ten-minute bus ride to the pier where they will board the Galapagos Legend.

 Afternoon



 Interpretation Center & Frigatebird Hill (San Cristobal Island)

The interpretation center is full of interesting information and offers the perfect overview of the formation of the Galapagos. Following a hike to Frigatebird Hill (Cerro Tijeretas) we will have a great look at both species of frigatebirds, with the bonus of a beautiful view of the bay below.



Difficulty level
Low / High ● ●



Type of terrain
Flat path / Rocky



Duration
1 hour hike
1 hour walk



DAY 2

FRIDAY

 Morning

One of the most stunning beaches in all of the Galapagos. The long, white, sandy beach, lapped by turquoise waters, home to a colony of Galapagos sea lions. Hood mockingbirds, endemic to this particular island. We can also snorkel here from the beach, in the shallows of the bay.



Difficulty level

Low ●



Type of terrain

Sandy



Duration

1 hour hike
30 min kayaking
30 min Glass-bottom boat
1 hour 45 min beach or deep snorkeling

 Afternoon



Punta Suarez is a naturalist's paradise. The oldest extant island in the archipelago is our only opportunity to commune with the endemic wave albatross during their breeding season between April and December. With luck, we can watch their complex courtship display.



Difficulty level

High ●



Type of terrain

Rocky



Duration

2 hours 15min hike



DAY 3

SATURDAY

 Morning



The famous Post Office Barrel. Claimed to have been first set up in 1793 by Captain James Colnett. The system involved whalers and fur sealers would leave addressed letters in the barrel to be picked up by homeward-bound colleagues. Actually visitors often take letters and hand-deliver them to their home countries.



Difficulty level
Medium ●



Type of terrain
Rocky



Duration
1 hour 15 min hike
1 hour beach snorkeling

 Afternoon

Our walk takes us to a large, shallow lagoon, often inhabited by a variable number of shockingly pink greater flamingos. We arrive at a powdery white beach, a nesting area for green turtles. Devil's Crown is one of the favorite snorkeling sites on the islands.



Difficulty level
Low ●



Type of terrain
Sandy & flat



Duration
1 hour 45 min hike
45 min glass-bottom or
45 min deep or beach snorkeling



DAY 4

SUNDAY

 Morning

Arriving at a small lava dock, our first encounter is with marine iguanas that blend-in perfectly with the dark rock. As we walk past a large prickly pear cacti, we arrive at one end of a long, sickle-shaped beach with Dragon Hill standing in the distance. Our walk takes us on a circular path, past a shallow lake where flamingoes frequently come to feed.



Difficulty level
Medium ●



Type of terrain
Rocky



Duration
45 min walk
1 hour 15 min snorkeling

 Afternoon



Feel the indescribable feeling of being where no one else has. Relax on a powdery beach. Snorkel around turquoise water islets and hike beside salt pools and dried white corals. Be one of the first humans -to visit Punta Bowditch at Galapagos Legend.



Difficulty level
Low ●



Type of terrain
Sandy



Duration
30 min walk
30 min kayaking
1 hour snorkeling



 Morning



 **Highlands & Charles Darwin Research Station (Santa Cruz Island)**

Highlands Tortoise Reserve

We have our best opportunity to interact at close quarters with totally wild, Galapagos giant tortoises. A short walk among these huge, 600lb reptiles will also offer the chance for more highland species, especially several species of the famed finches.

Charles Darwin Research Station

We visit the Station where the Galapagos giant tortoise breeding program takes place as part of our efforts to preserve the fragile Galapagos environment.



Difficulty level
Low ●



Type of terrain
flat & muddy
depending on the season



Duration
1 ½ hour walk
45 minute drive

 Afternoon



 **Black Turtle Cove (Santa Cruz Island)**

On the north shore of Santa Cruz Island, accessible only by sea, four species of mangrove crowd and form an internal lagoon, turtles visit the calm waters, peaking their heads above the surface while fish, rays circle below. White-tipped reef sharks can be seen beneath the boat, plus sea birds, including pelicans, herons and egrets. This cove has been declared as a "turtle sanctuary".



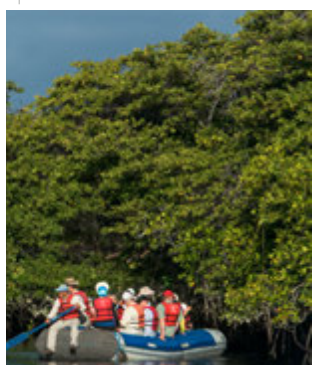
Difficulty level
Low ●



Type of terrain
none



Duration
1 hour dingy ride



DAY 6

TUESDAY

 Morning

Be marveled at the variety of sea life that uses the crevices of the lava cliffs for shelter. Red-billed Tropicbirds fly overhead, and a small colony of fur seals may be found near the landing site. You will be dropped off at a steep stairway that begins on rocks at the foot of a path that leads through a seabird colony full of Nazca and Red-footed Boobies.



Difficulty level
Medium ●



Type of terrain
Rocky - lava



Duration
30 min kayaking
1 hour 45 min hike
1 hour deep snorkeling
30 min glass bottom boat

 Afternoon



From within the flooded caldera of Tower Island, we set foot onto a sandy beach to be greeted by swallow-tailed gulls often said to be the most beautiful gull in the world. In the trail we can see at nesting red-footed boobies and great frigatebirds.



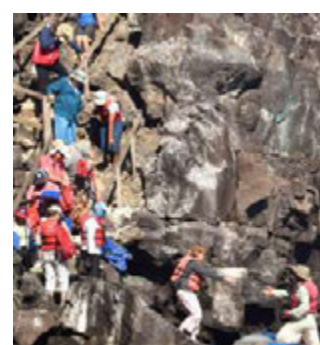
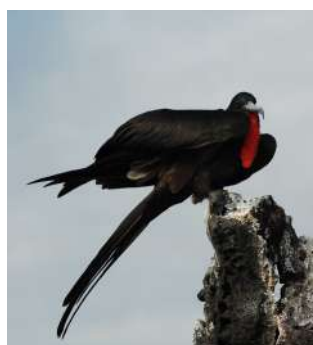
Difficulty level
Medium ●



Type of terrain
Sandy



Duration
45 min Kayaking
1 hour 15 min hike
45 min Glass-bottom boat
1 hour deep or beach snorkeling



DAY 7

WEDNESDAY

 Morning



Sea lions, swallow-tailed gulls, and land iguanas are all present at the landing site. The small island is covered with a carpet of a red succulent studded with Opuntia cacti. At the cliff edge, we spend time watching birds like frigatebirds, flocks of Galapagos shearwaters, and of particular note, flights of displaying red-billed tropicbirds.



Difficulty level
Medium ●



Type of terrain
Rocky



Duration
2 hours hike

 Afternoon

After a fabulous snorkel in the turquoise waters of the protected bay, we may have enjoyed time with sea lions, turtles, reef sharks and spotted eagle rays. Landing on a sandy beach, we spend time watching the abundant sea lions there with us and . We begin a walk past a forest of island-endemic giant Opuntia cacti and we can watch the Santa Fe land Iguana



Difficulty level
Medium ●



Type of terrain
Rocky



Duration
30 min Kayaking
1 hour 45 min hike
1 hour deep snorkeling
45 min Glass-bottom boat

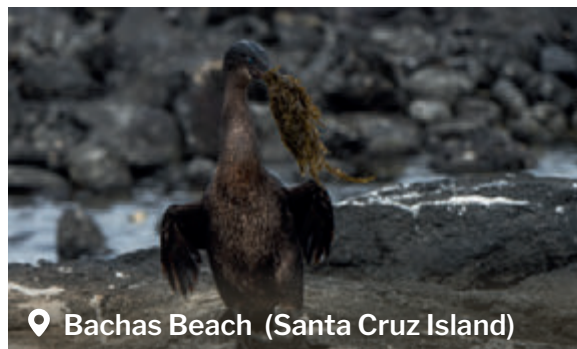


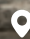
DAY 8

THURSDAY

 Morning

Named for some wrecked World War II barges whose ribs are still visible in the sand this visitor site offers great swimming, a lovely walk along the shore, and a visit to a lagoon behind the high tide line with wading birds, marine iguanas and sometimes even flamingoes. The two beaches are also favorite nesting sites for green turtles which often leave tractor-like tracks in the sand.



 Bachas Beach (Santa Cruz Island)



Difficulty level
Intermediate ●



Type of terrain
Flat / Semi - rocky



Duration
1 ½ hour walk



 Baltra Island Airport

After the visit, passengers will be transferred to the airport for their return flight to Guayaquil or Quito.